



THE WHITE HOUSE  
WASHINGTON

# COVID-19 Press Briefing

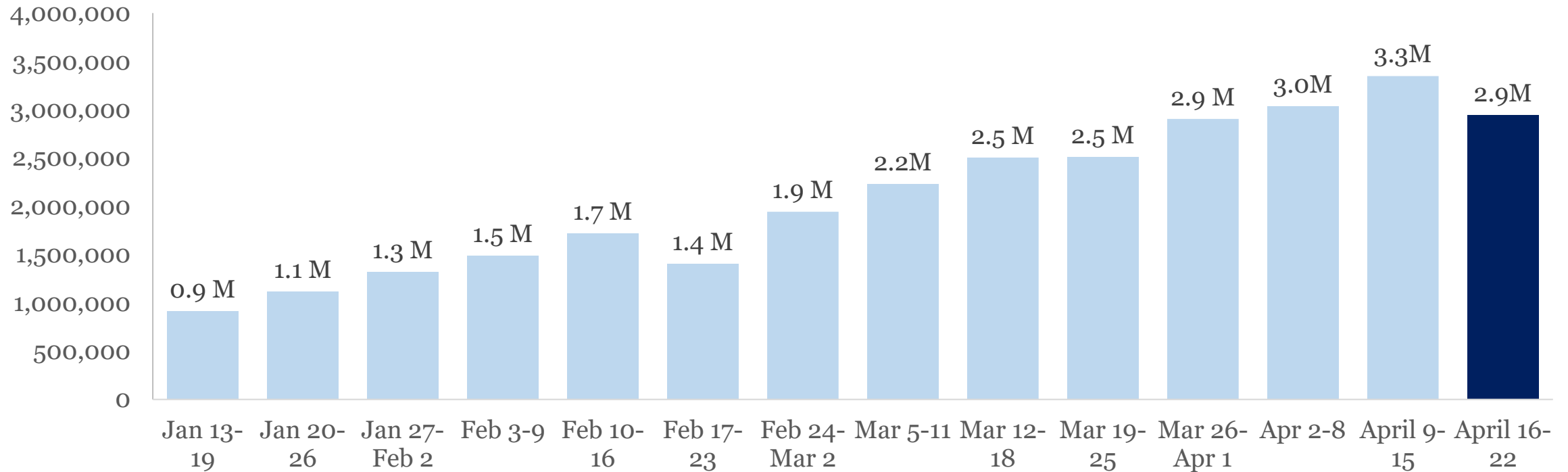
April 23, 2021



# The Vaccination Progress Report

7-day average daily doses administered by week as of 4/22/2021\*

## Doses per day



\*7-day average from March 3 – March 9 was 2.2M



# Daily Change in COVID-19 Cases, US

January 22, 2020 – April 21, 2021

TOTAL Cases Reported Since 1/22/20

31,666,546

NEW Cases Reported to CDC on 4/21/21

62,827

Change in 7-Day Case Average

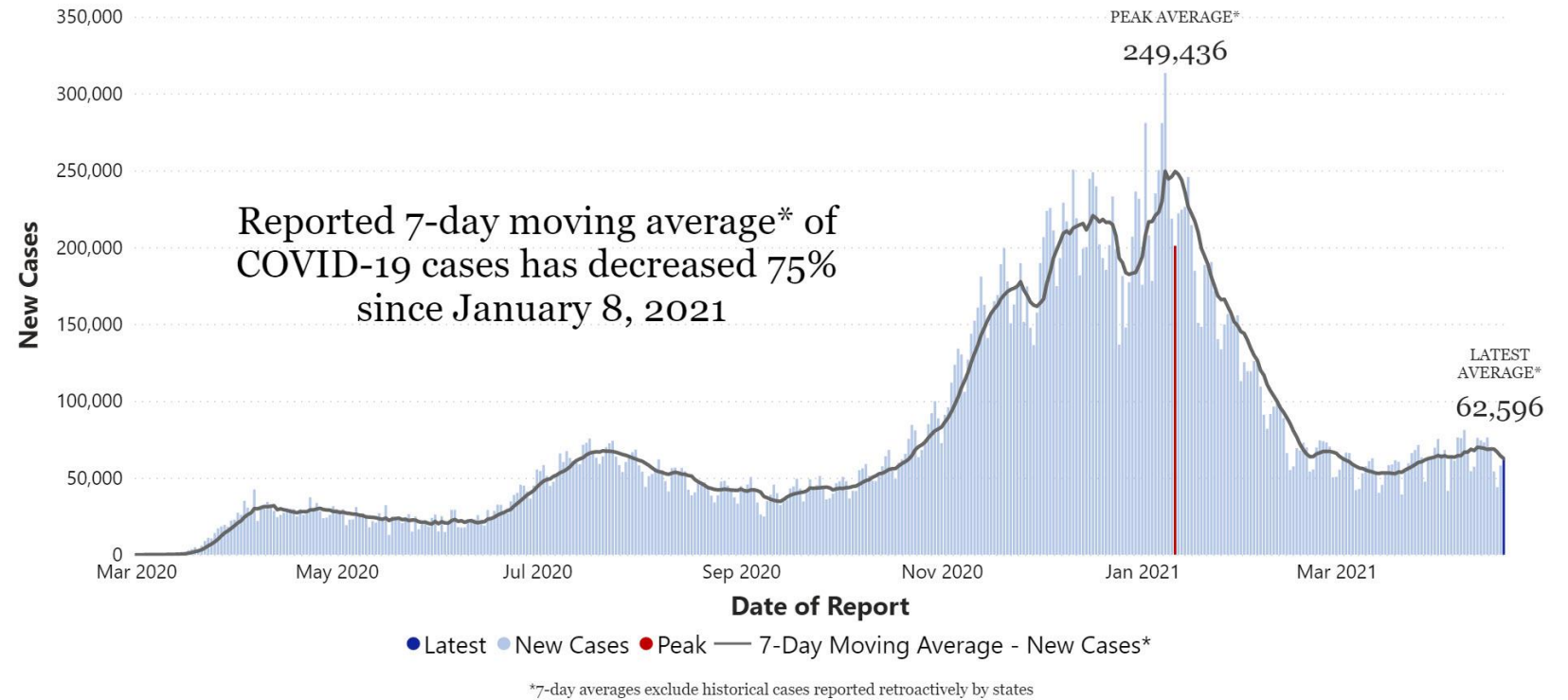
-10.1%

Current 7-Day Case Average (4/15/21 - 4/21/21)

62,596

Prior 7-Day Case Average (4/8/21 - 4/14/21)

69,614



# New Admissions of Patients with Confirmed COVID-19

August 1, 2020 – April 20, 2021

Patients Currently Hospitalized with COVID on 4/20/21

38,876

New Admissions on 4/20/21

5,963

Peak in New Admissions (1/5/21)

17,988

Change in 7-Day Average of New Admissions

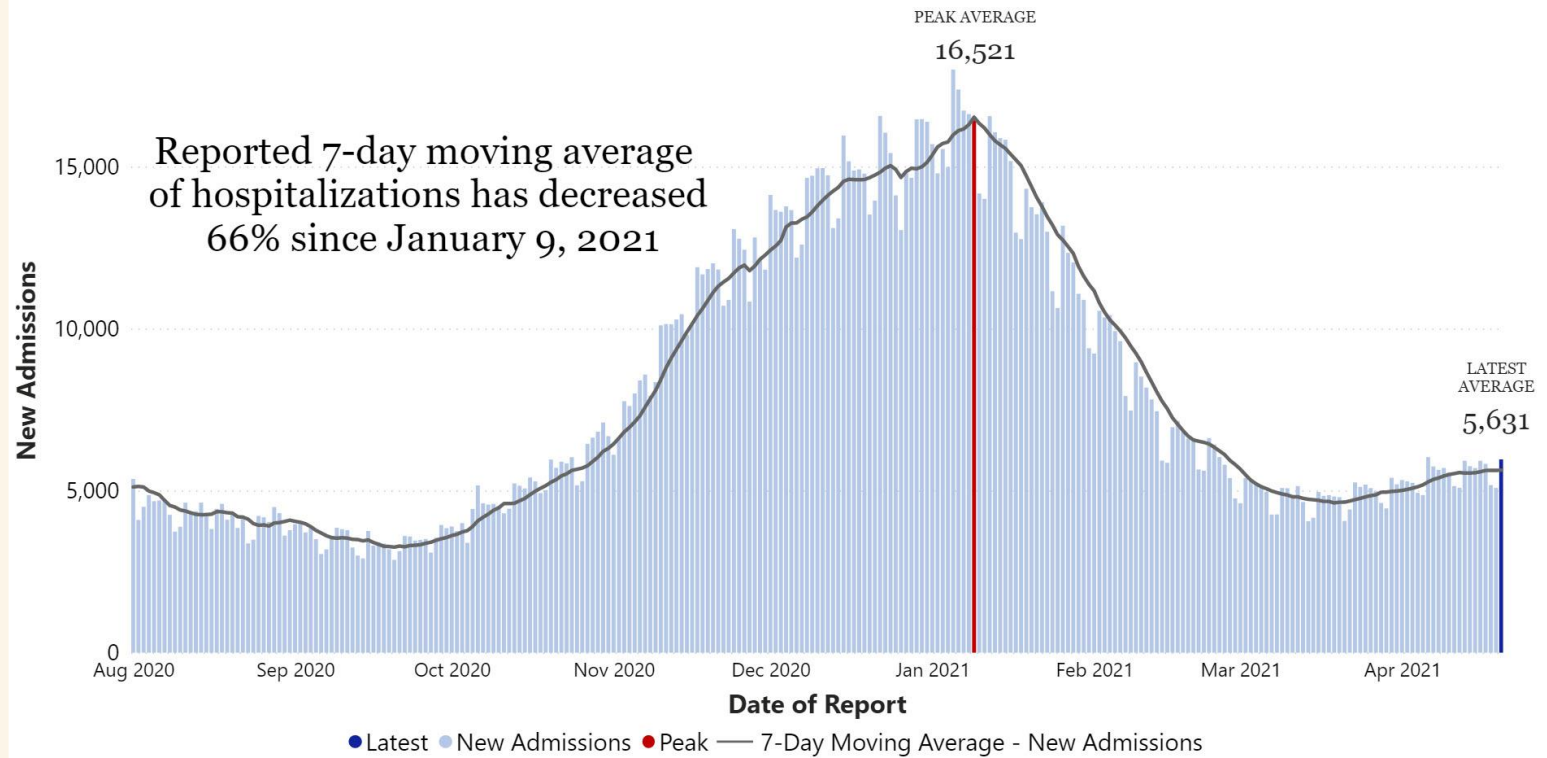
+1.6%

Current 7-Day Average of New Admissions (4/14/21 - 4/20/21)

5,631

Prior 7-Day Average of New Admissions (4/7/21 - 4/13/21)

5,541



# Daily Change in COVID-19 Deaths, United States

January 22, 2020 – April 21, 2021

TOTAL Deaths Reported Since 1/22/2020

566,494

NEW Deaths Reported to CDC on 4/21/21

875

Change in 7-Day Death Average

-3.7%

Current 7-Day Death Average (4/15/21 - 4/21/21)

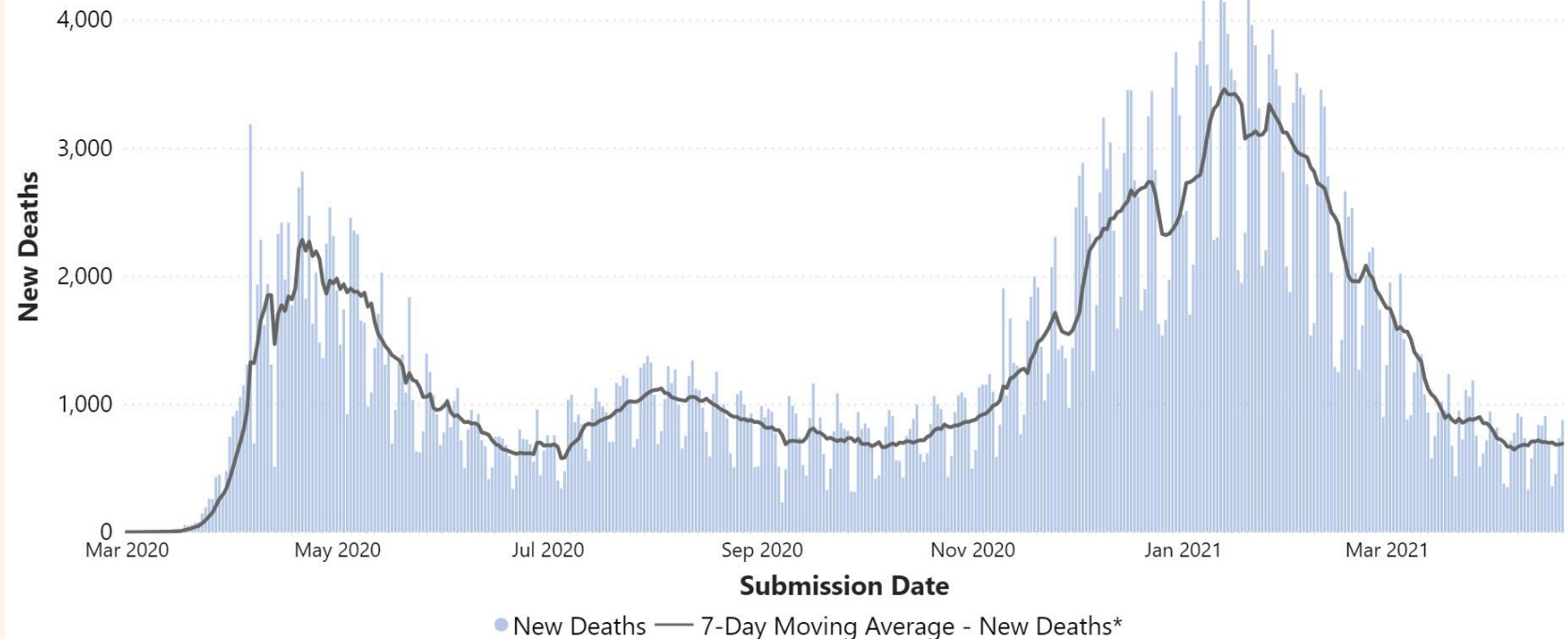
691

Prior 7-Day Death Average (4/8/21 - 4/14/21)

717

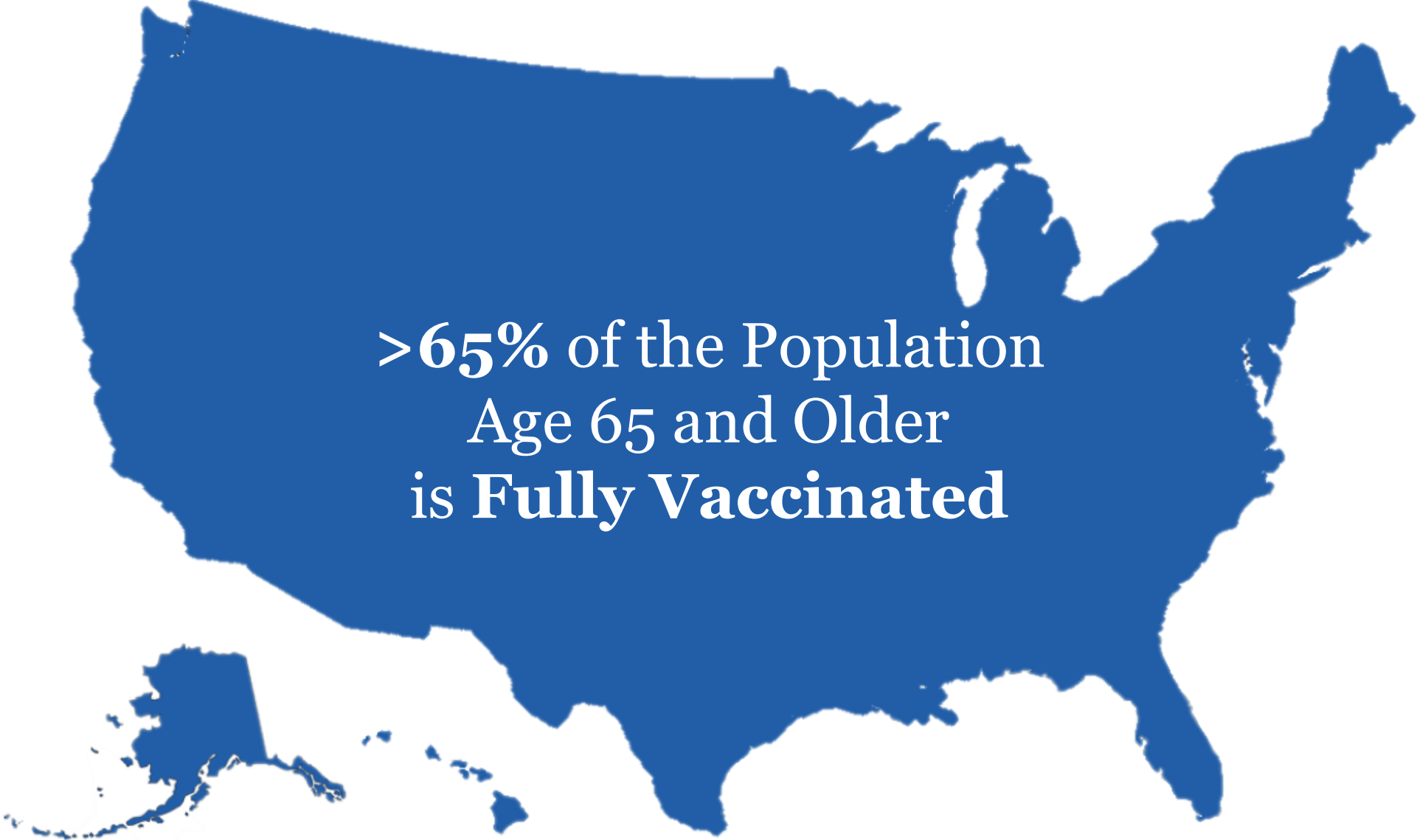
Forecasted Total Deaths by 5/15/21

579,000 to 596,000



\*7-day averages exclude historical cases reported retroactively by states

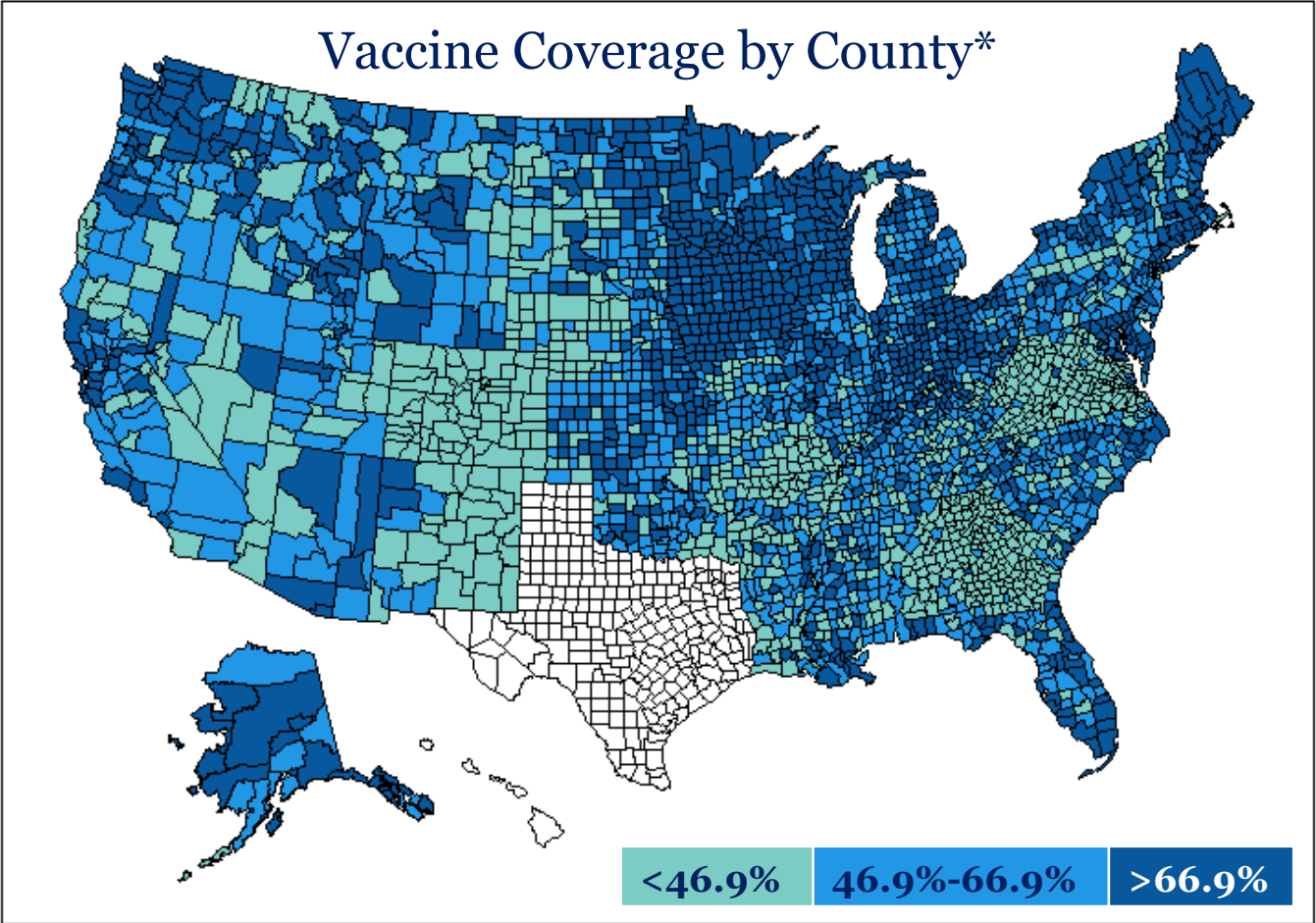




>65% of the Population  
Age 65 and Older  
is **Fully Vaccinated**



# 65% of the Population Age 65 and Older is Fully Vaccinated



\*County level data are variable for each state



# Stay up-to-date on the latest data in your state and county

The screenshot shows the CDC COVID Data Tracker website. At the top, the CDC logo and tagline "Centers for Disease Control and Prevention" are visible, along with a search bar. The main header is "COVID Data Tracker". Below this, there are navigation tabs for "Cases in US", "Cases in US Last 30 Days", "Total Vaccines Administered", "Deaths in US", and "Deaths in US Last 30 Days".

The main content area is divided into several sections:

- Data Tracker Home:** A section with a "Data Tracker Home" link.
- COVID Data Tracker Weekly Review:** A section with a "COVID Data Tracker Weekly Review" link and a sub-link "An interpretive summary of this week's data".
- Recent updates:** A list of updates including "Trends in Emergency Department Visits", "Addition of Puerto Rico's data to the CDC Social Vulnerability Index", and "A new tab in the Genomic Surveillance section".
- Your Community:** A section with a "County View" link and a sub-link "Track cases, deaths, hospitalizations, and more for your community". Below this is a map of the United States with a color-coded overlay representing COVID-19 data.
- Forecasting:** A section with a "Forecasting" link and a sub-link "See expectations for case increases or decreases for your state and across the US".
- Vaccinations in the US:** A section with a "Vaccinations in the US" link and a sub-link "View doses delivered, administered, and more for your state and across the US".
- Mobility:** A section with a "Mobility" link and a sub-link "Monitor changes in human activity across the US".
- Pandemic Vulnerability Index:** A section with a "Pandemic Vulnerability Index" link and a sub-link "Visualize risk profiles of vulnerability to COVID-19 by county".

On the left side, there is a vertical navigation menu with links for "Your Community", "Vaccinations", "Cases & Deaths", "Demographic Trends", "Health Care Settings", "Genomic Surveillance", "Testing and Seroprevalence", "People at Increased Risk", "Communications Resources", and "COVID-19 Home". At the bottom of this menu is a "Get Email Updates" button.

CDC COVID Data Tracker <https://bit.ly/CDThomepage>





# Vaccine Safety in Pregnant Persons

- >35,000 people who received COVID-19 vaccine before or during pregnancy
- Pregnant people reported similar side effects after vaccination
- No safety concerns for people vaccinated in the third trimester or for their babies
- If you are pregnant, you should be offered and may choose to receive a COVID-19 vaccine



The NEW ENGLAND  
JOURNAL of MEDICINE

## Preliminary Findings of mRNA Covid-19 Vaccine Safety in Pregnant Persons

Tom T. Shimabukuro, M.D., Shin Y. Kim, M.P.H., Tanya R. Myers, Ph.D., Pedro L. Moro, M.D., Titilope Oduyebo, M.D., Lakshmi Panagiotakopoulos, M.D., Paige L. Marquez, M.S.P.H., Christine K. Olson, M.D., Ruiling Liu, Ph.D., Karen T. Chang, Ph.D., Sascha R. Ellington, Ph.D., Veronica K. Burkel, M.P.H., Ashley N. Smoots, M.P.H., Caitlin J. Green, M.P.H., Charles Licata, Ph.D., Bicheng C. Zhang, M.S., Meghna Alimchandani, M.D., Adamma Mba-Jonas, M.D., Stacey W. Martin, M.S., Julianne M. Gee, M.P.H., and Dana M. Meaney-Delman, M.D., for the CDC v-safe COVID-19 Pregnancy Registry Team\*

Published Online April 21, 2021



# Med

Available online April 20, 2021



Commentary

# COVID-19: The Therapeutic Landscape

Catharine I. Paules & Anthony S. Fauci

- **Clinical trial data should guide therapeutics use, results should not be extrapolated between disease stages, and robust studies should be designed to give clinically relevant data**



# Pharmacologic Management of Patients with COVID-19

[www.covid19treatmentguidelines.nih.gov](http://www.covid19treatmentguidelines.nih.gov)

Updated April 21, 2021

## DISEASE SEVERITY

## PANEL'S RECOMMENDATIONS

Not Hospitalized,  
Mild to Moderate COVID-19

For patients who are not at high risk for disease progression, provide supportive care and symptomatic management (AIII).

For patients who are at high risk of disease progression (as defined by the FDA EUA criteria for treatment with anti-SARS-CoV-2 monoclonal antibodies), use one of the following combinations:

- Bamlanivimab plus etesevimab (AIIa)
- Casirivimab plus imdevimab (AIIa)

Hospitalized but Does Not Require Supplemental Oxygen

There are insufficient data to recommend either for or against the routine use of remdesivir. For patients at high risk of disease progression, the use of remdesivir may be appropriate.

Hospitalized and Requires Supplemental Oxygen

Use one of the following options:

- Remdesivir<sup>1,2</sup> (e.g., for patients who require minimal supplemental oxygen) (BIIa)
- Dexamethasone<sup>2</sup> plus remdesivir<sup>1,2</sup> (e.g., for patients who require increasing amounts of supplemental oxygen) (BIII)<sup>1a</sup>
- Dexamethasone<sup>2</sup> (e.g., when combination therapy with remdesivir cannot be used or is not available) (BI)

Hospitalized and Requires Oxygen Delivery Through a High-Flow Device or Noninvasive Ventilation

Use one of the following options:

- Dexamethasone<sup>2</sup> (AI)<sup>2</sup>
- Dexamethasone<sup>2</sup> plus remdesivir<sup>1,2</sup> (BIII)<sup>1a</sup>

For patients who were recently hospitalized<sup>3</sup> with rapidly increasing oxygen needs and systemic inflammation:

- Add tocilizumab<sup>2</sup> to one of the two options above (BIIa)

Hospitalized and Requires Invasive Mechanical Ventilation or ECMO

- Dexamethasone<sup>2</sup> (AI)<sup>2</sup>

For patients who are within 24 hours of admission to the ICU:

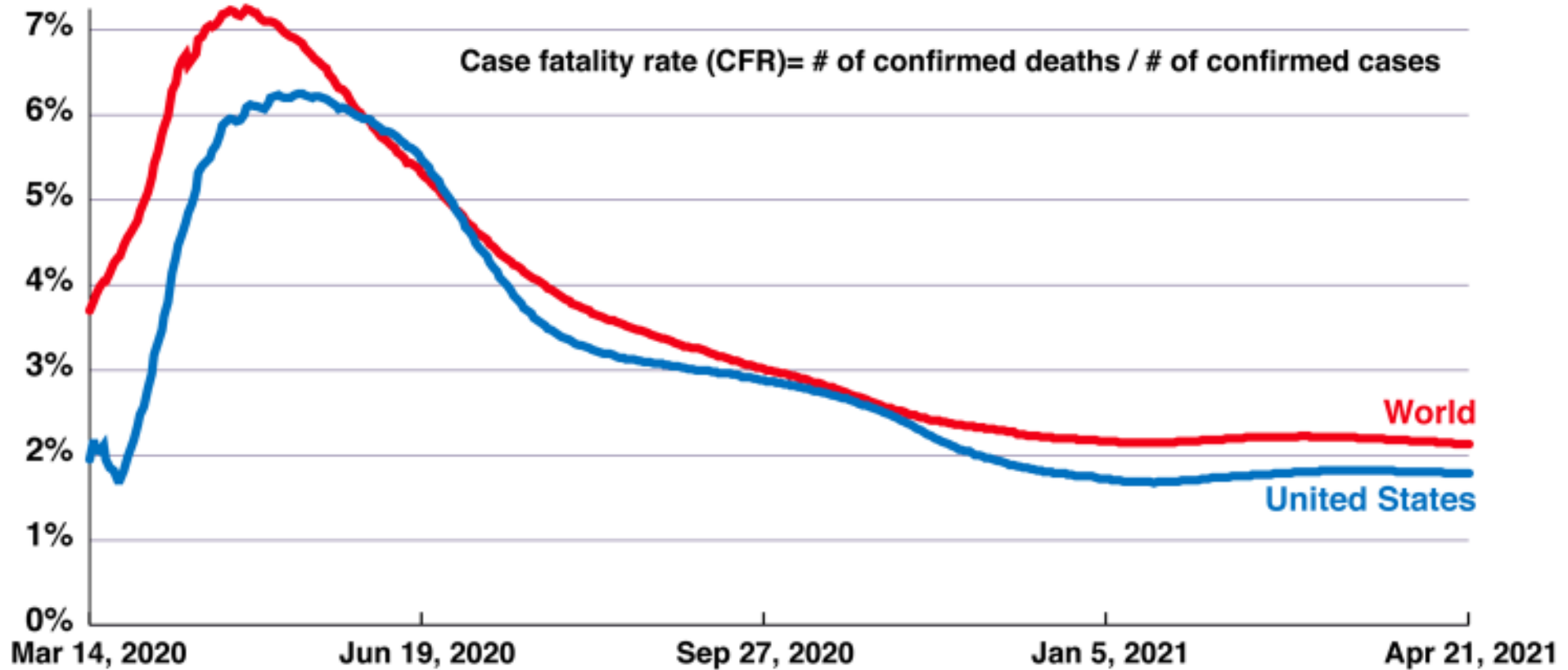
- Dexamethasone<sup>2</sup> plus tocilizumab<sup>2</sup> (BIIa)

Rating of Recommendations: A = Strong; B = Moderate; C = Optional

Rating of Evidence: I = One or more randomized trials without major limitations; IIa = Other randomized trials or subgroup analyses of randomized trials; IIb = Nonrandomized trials or observational cohort studies; III = Expert opinion



# Case Fatality Rate of the Ongoing COVID-19 Pandemic

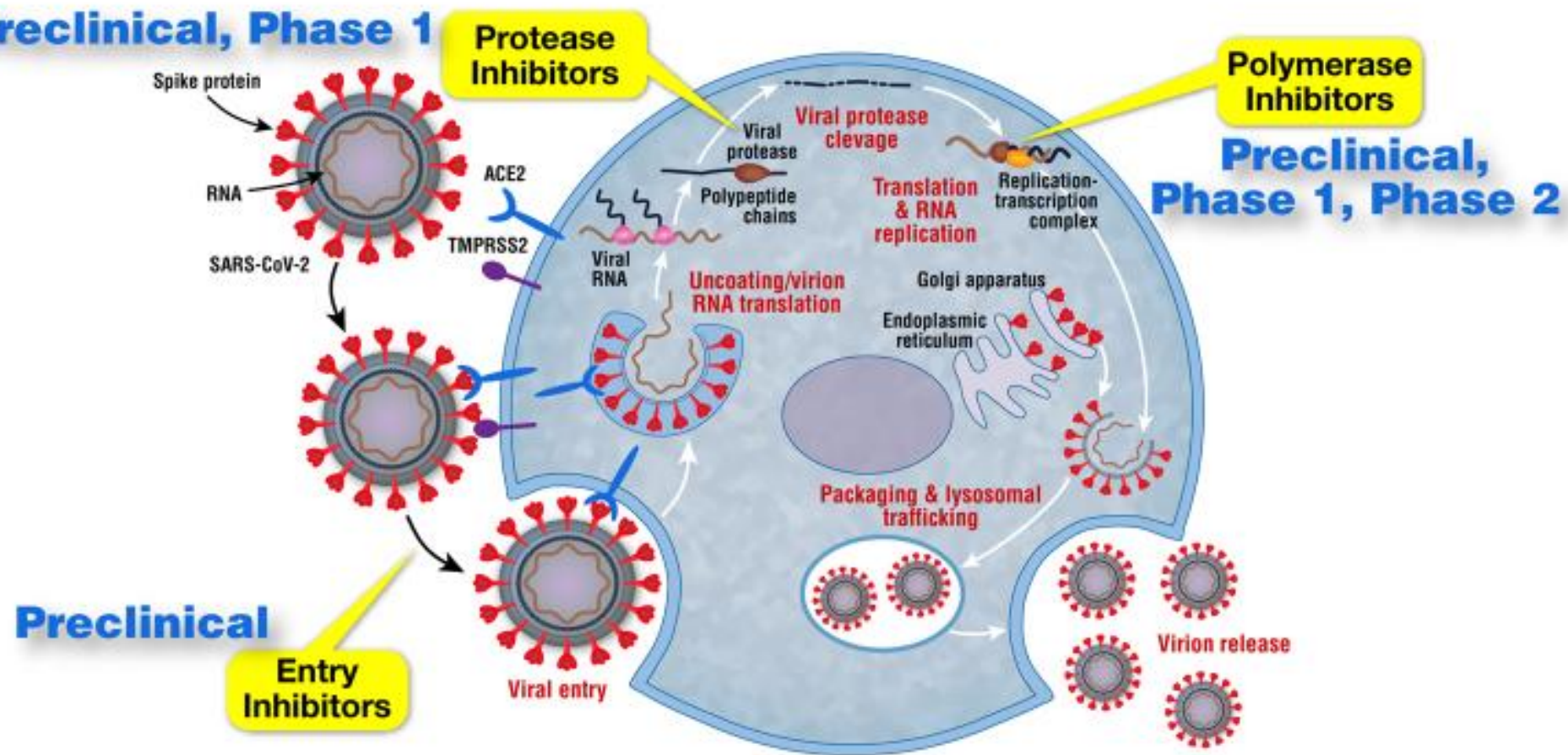


Source: Our World in Data/JHU CSSE



# SARS-CoV-2 Replication Cycle: Targets for Antiviral Therapeutics

Preclinical, Phase 1



Preclinical

Entry Inhibitors

Protease Inhibitors

Polymerase Inhibitors

Preclinical, Phase 1, Phase 2





## News Release

# Large Clinical Trial to Study Repurposed Drugs to Treat COVID-19

- **ACTIV-6: Randomized, placebo-controlled, phase 3 trial**
- **Total n= 13,500 outpatients with mild-to-moderate COVID-19**
- **Trial will evaluate up to 7 existing prescription and over-the-counter medications that participants will self-administer**
- **Focus on enrollment of people from minority, rural and other communities significantly affected by COVID-19 who may lack access to academic medical centers**





## News Release

# **Large NIH Clinical Trial Will Test Polyclonal Antibody Therapeutic for COVID-19**

- **Phase 2/3 trial (ACTIV-2) evaluating SAB-185 in up to 530 outpatients with mild/moderate COVID-19**
- **Participants will receive SAB-185, placebo, or another therapeutic currently being evaluated in ACTIV-2**
  - **BR11-196 + BR11-198 (antibodies)**
  - **SNG001 (inhalable interferon beta)**
  - **AZD7442 (long-acting monoclonal antibody combination)**
  - **Camostat mesylate (oral serine protease inhibitor)**





## News Release

# Clinical Trial of Therapeutics for Severely Ill Hospitalized COVID-19 Patients Begins

- Phase 3 randomized, blinded, placebo-controlled trial
- Total n ≈620 hospitalized COVID-19 patients with acute respiratory failure requiring high-flow supplemental oxygen, mechanical ventilation, or extracorporeal membrane oxygenation
- Study evaluating Zyesami (synthetic version of Vasoactive Intestinal Peptide) and remdesivir (alone and in combination) in addition to standard of care







THE WHITE HOUSE  
WASHINGTON

WH.GOV