



THE WHITE HOUSE  
WASHINGTON

# COVID-19 Press Briefing

March 15, 2021



# Daily Change in COVID-19 Cases, US

January 22, 2020 – March 13, 2021

TOTAL Cases Reported Since 1/22/20

29,147,356

NEW Cases Reported to CDC on 3/13/21

52,504

Change in 7-Day Case Average

-9.8%

Current 7-Day Case Average (3/7/21 - 3/13/21)

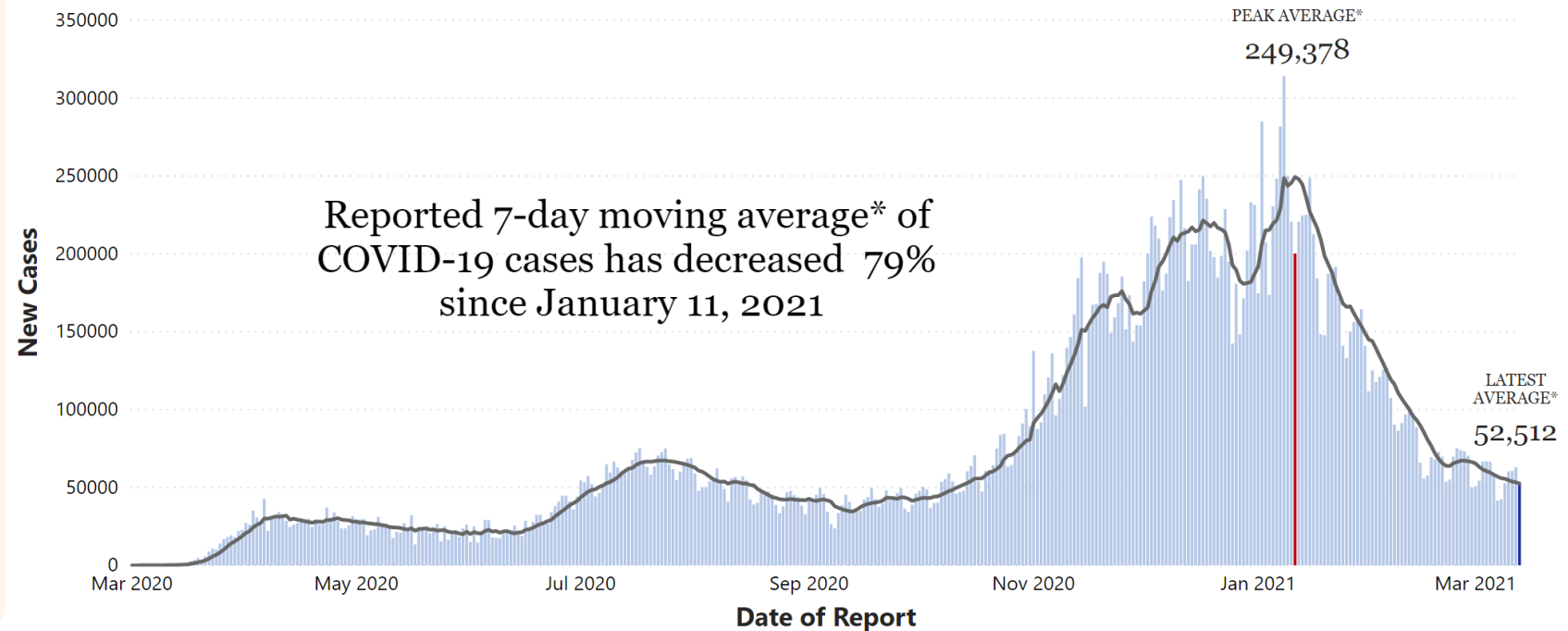
52,512

Prior 7-Day Case Average (2/28/21 - 3/6/21)

58,226



Peaks in New Cases and Highest 7-Day Moving Average		
	Highest Daily Number of New Cases	Highest 7-Day Moving Average
<b>Current</b>	314,180 (1/8/21)	249,378 (1/11/21)
<b>2<sup>nd</sup> Peak</b>	75,192 (7/17/20)	67,277 (7/23/20)
<b>1<sup>st</sup> Peak</b>	42,597 (4/6/20)	31,933 (4/12/20)



● Latest ● New Cases ● Peak — 7-Day Moving Average - New Cases\*

\*7-day averages exclude historical cases reported retroactively by states



# New Admissions of Patients with Confirmed COVID-19

August 1, 2020 – March 12, 2021

Patients Currently Hospitalized with COVID on 3/12/21

**30,791**

New Admissions on 3/12/21

**4,585**

Peak in New Admissions (1/5/21)

**18,009**

Change in 7-Day Average of New Admissions

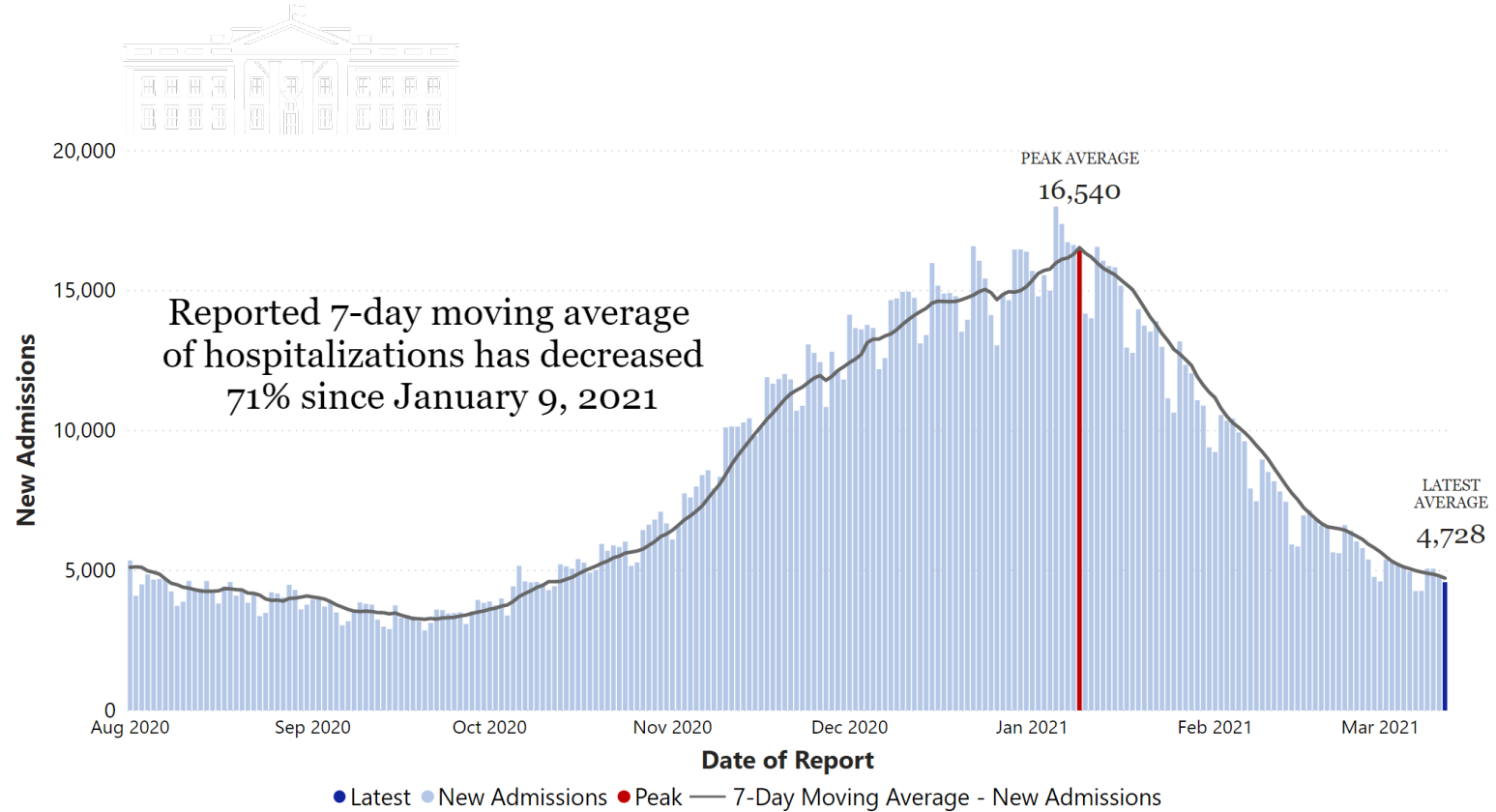
**-7.8%**

Current 7-Day Average of New Admissions (3/6/21 - 3/12/21)

**4,728**

Prior 7-Day Average of New Admissions (2/27/21 - 3/5/21)

**5,129**



# Daily Change in COVID-19 Deaths, United States

January 22, 2020 – March 13, 2021

TOTAL Deaths Reported Since 1/22/2020

**531,766**

NEW Deaths Reported to CDC on 3/13/21

**1,073**

Change in 7-Day Death Average

**-30.0%**

Current 7-Day Death Average (3/7/21 - 3/13/21)

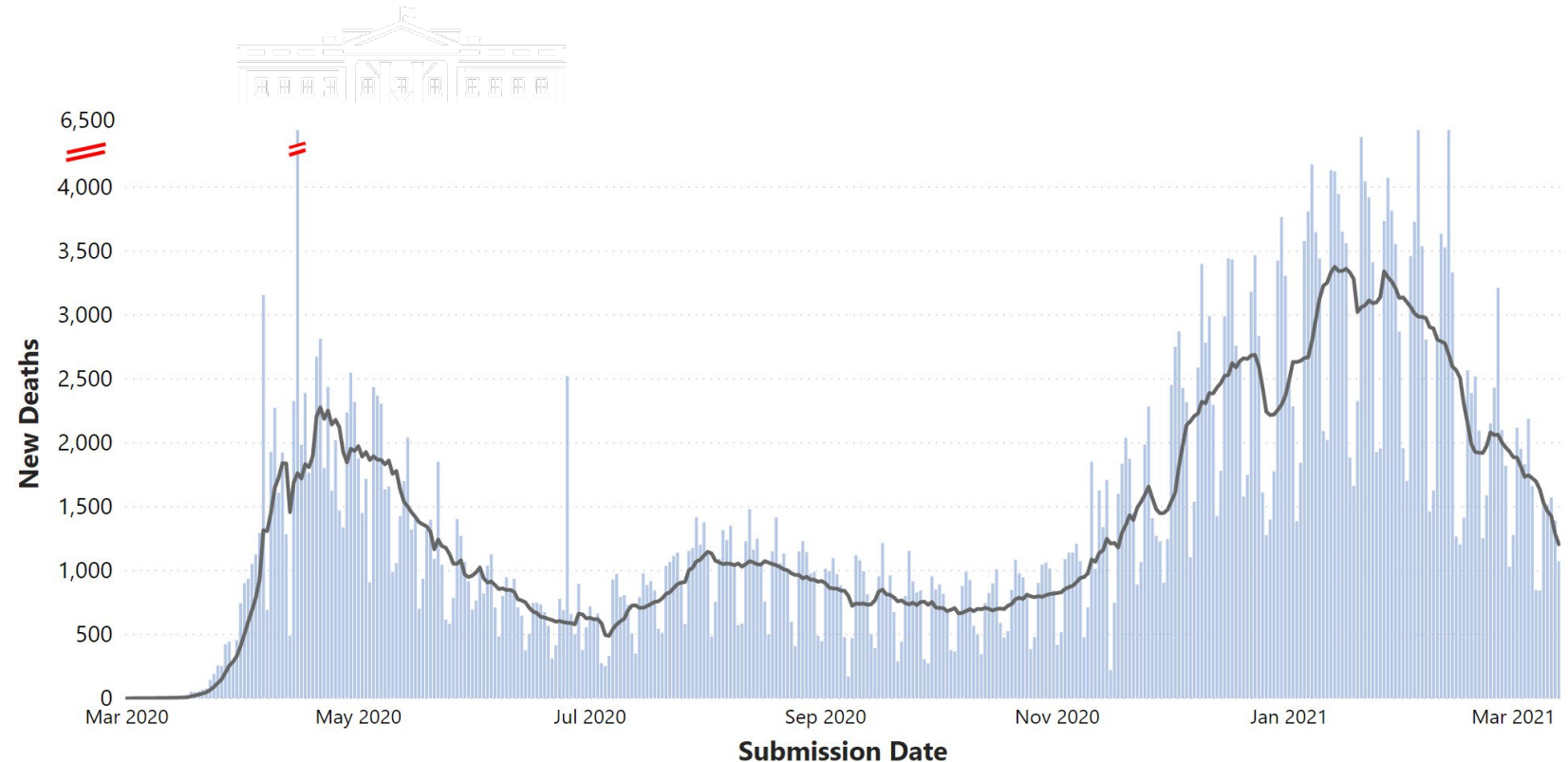
**1,206**

Prior 7-Day Death Average (2/28/21 - 3/6/21)

**1,724**

Forecasted Total Deaths by 4/3/21

**547,000 - 571,000**



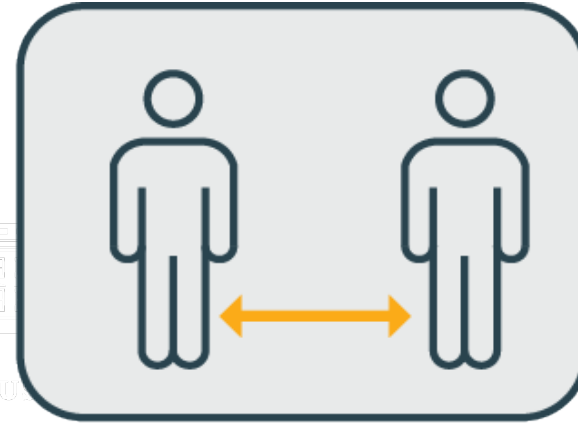
● New Deaths — 7-Day Moving Average - New Deaths\*

\*7-day averages exclude historical cases reported retroactively by states





**WEAR A MASK**



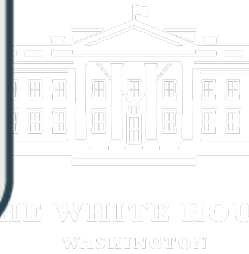
**STAY 6 FEET APART**



**AVOID CROWDS**



**AVOID TRAVEL**



■ Priority pathogens

■ Platform technologies

■ Prototype pathogens

November 14, 2017

Volume 318, Number 18

**JAMA**

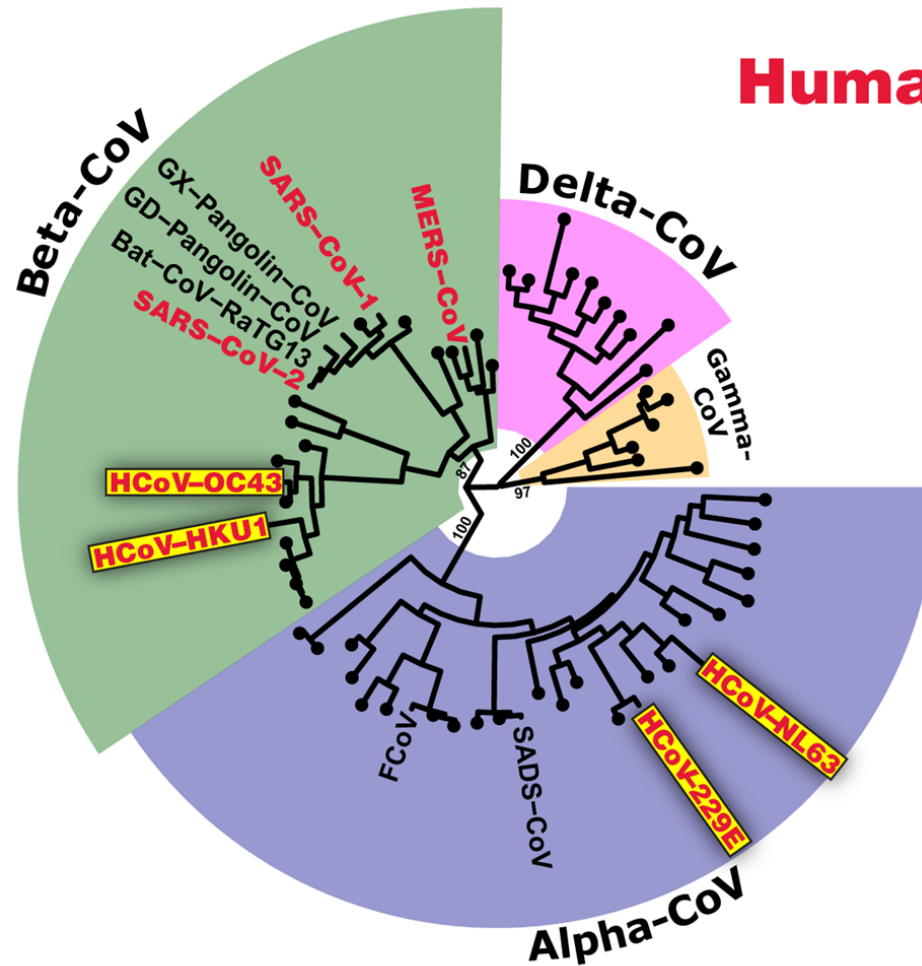
The Journal of the  
American Medical Association

# **The Critical Role of Biomedical Research in Pandemic Preparedness**

HD Marston, CI Paules and AS Fauci



# Coronavirus Phylogenetic Tree

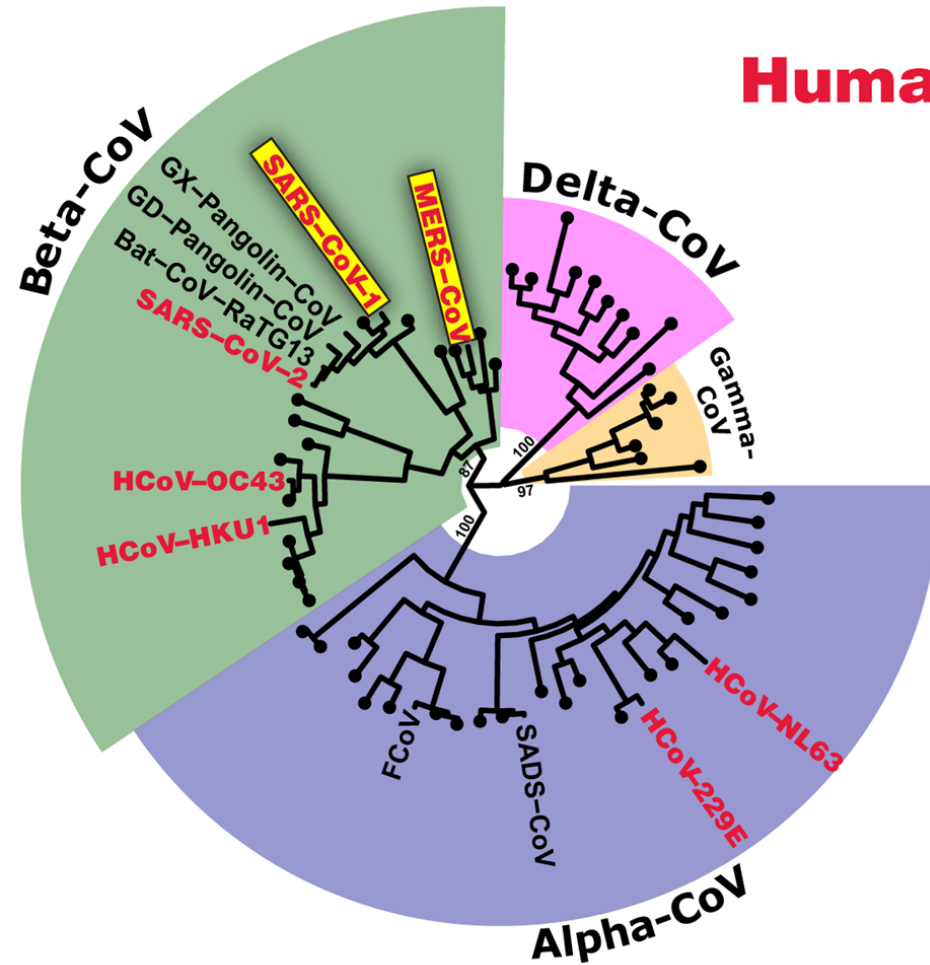


## Human coronaviruses

Source: SM Gygli, PhD, NIAID. Based on 440 bp nucleotide sequences of RNA-dependent RNA polymerase.



# Coronavirus Phylogenetic Tree



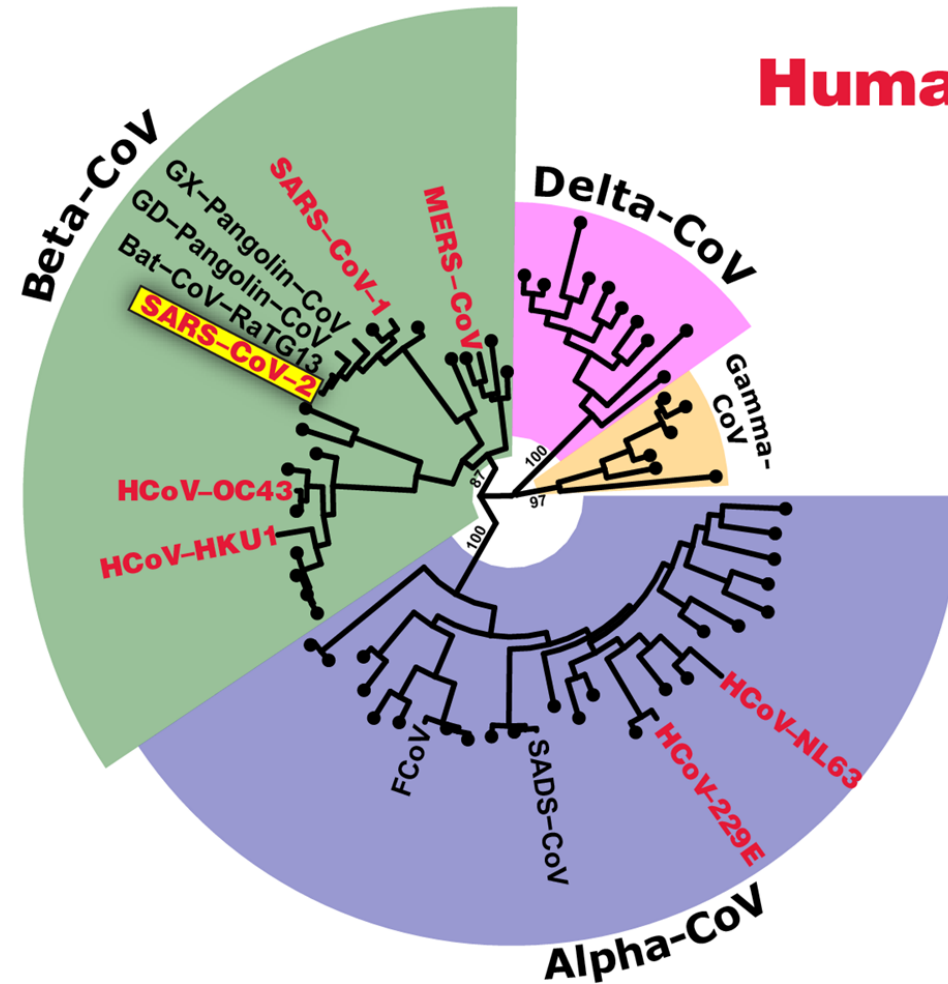
## Human coronaviruses

Source: SM Gygli, PhD, NIAID. Based on 440 bp nucleotide sequences of RNA-dependent RNA polymerase.





# Coronavirus Phylogenetic Tree



Source: SM Gygli, PhD, NIAID. Based on 440 bp nucleotide sequences of RNA-dependent RNA polymerase.



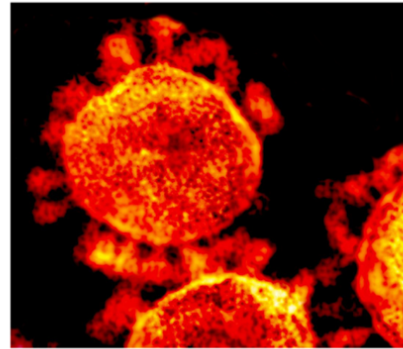
# Structure-Guided Stabilization of MERS-CoV Spike Protein



RESEARCH ARTICLE

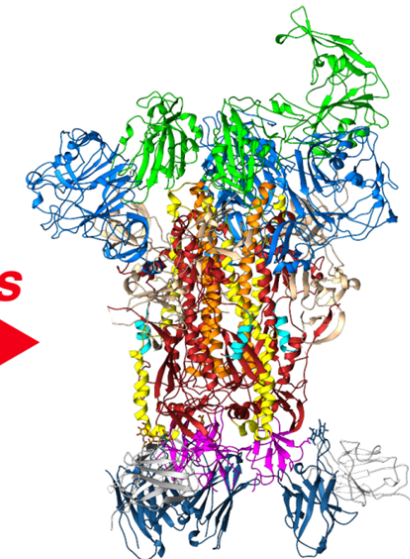
## Immunogenicity and Structures of a Rationally Designed Prefusion MERS-CoV Spike Antigen

J Pallesen, JS McLellan et al.



MERS-CoV Spike Protein  
Pre-fusion Form  
(Unstable)

*Mutations*  
→

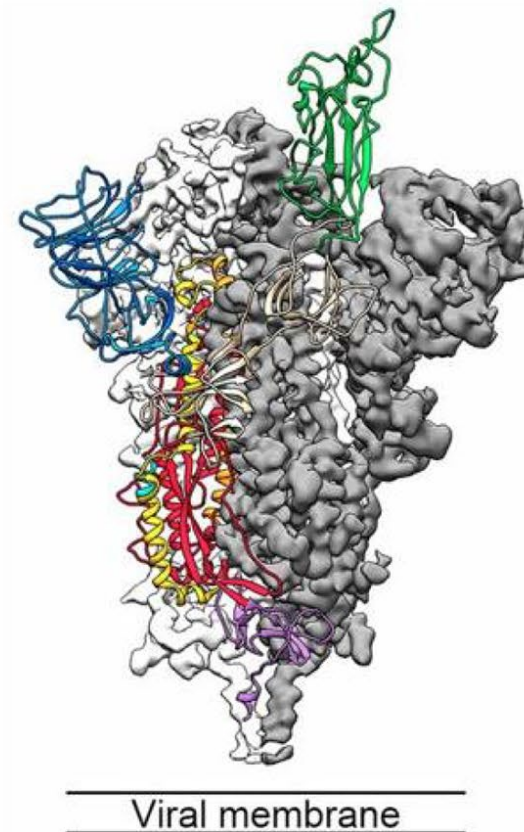


MERS-CoV Spike Protein  
Pre-fusion Form  
(Stable)









# **Cryo-EM Structure of the 2019-nCoV Spike in the Prefusion Conformation**

D Wrapp, N Wang, KS Corbett, JA Goldsmith,  
C-L Hsieh, O Abiona, BS Graham, JS McLellan



**Atomic-level structure of SARS-CoV-2  
spike protein. Receptor binding  
domain is colored green.**

# COVID-19 Vaccines in USG Development Portfolio

Developer	Status	S-2P Antigen
	■ EUA	✓
	■ EUA	✓
	■ EUA	✓
	■ EUA TBD	
	■ Phase 2 clinical trial launched Feb. 2021	✓
	■ EUA TBD	✓



THE WHITE HOUSE  
WASHINGTON

WH.GOV